



# Notice to Mariners

## Rampion Offshore Wind Farm

Date of Issue: 10/11/2017

Notice Expires: Ongoing

All Mariners,

### Re: Rampion Offshore Wind Farm – Additional Array cables surveys

The survey vessel Bibby Athena will be undertaking the above surveys as from the week starting 20/11/2017 and operations are due to last approximately 3 days 24 hrs a day weather permitting.

The vessel will be operating within the main wind farm array.



**Bibby Athena**  
**Call sign- 2ICA5**  
**MMSI-235108458**  
**Length-27.5**  
**Beam-10**  
**Draught-2.9**

### Actions

The Survey vessel will be restricted in manoeuvrability during operations. All vessels are requested to remain a minimum safe distance of 500m from the vessel at all times.

All mariners should be aware that High Speed project vessels (crew transfer vessels) are operating between the ports of Brighton, Shoreham, predominantly Newhaven and the wind farm.

Locations are depicted in the below table:

Strings 11 & 12	Strings 9 & 10	Strings 7 & 8	Strings 5 & 6	Strings 3 & 4	Strings 1 and 2
B09-A09	F12-F13	H11-I12	EOS-E08	EOS-E07	EOS-F05
A09-A10	F15-G15	I12-I13	N09-M08	N08-O09	EOS-F04
A10-B10	G15-H15	I13-J14		O09-O07	I02-J02
D08-EOS	H15-I15	J14-J13		N06-M06	G02-F03
	F14-G13	K13-K12		G05-EOS	
	G13-H13	J09-K09			
	H13-H12	F09-EOS			
	EO9-EOS				

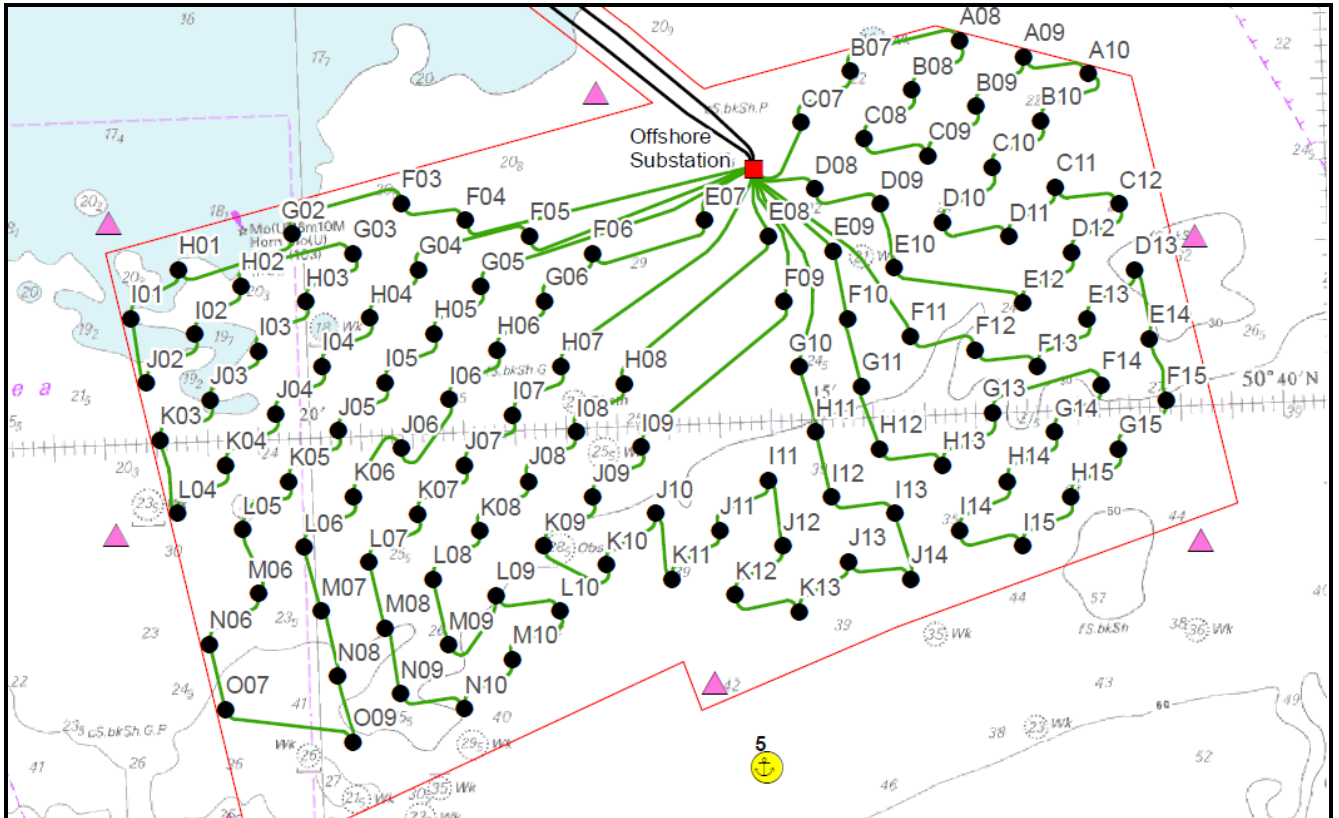


# Notice to Mariners

## Rampion Offshore Wind Farm

Date of Issue: 10/11/2017

Notice Expires: Ongoing



**Jan Bachmann**

Offshore Site Manager

Tel: +49 151 62438252

Email: [jan.bachmann@eon.com](mailto:jan.bachmann@eon.com)

**Gordon Bain**

Lead Marine Coordinator

Tel: +44 (0) 7816 648082

Email: [leadmc@rampionoffshore.com](mailto:leadmc@rampionoffshore.com)

**Duty Marine Coordinator**

Tel: +44 (0) 7557 942945

Email: [traffic@rampionoffshore.com](mailto:traffic@rampionoffshore.com)

**Alex Winrow-Giffin**

Brown & May Fisheries Liaison

Tel: +44 (0) 7760 160039

Email: [alex@brownmay.com](mailto:alex@brownmay.com)