



# Notice to Mariners

## Rampion Offshore Wind Farm

Date of Issue: 10/02/2018

Notice Expires: Ongoing

Dear Authorities, Owners, Ships Agents, Masters, Pilots and Fishermen,

**Re: Rampion Offshore Wind Farm - Rampion Export cable surface laid & wet stored anchor cable.**

### Export Cable:

Due to technical problems and weather forecasts the Stemat Spirit will surface lay the export cable from KP5 to the Offshore Substation. Weather permitting there will be a guard vessel in the vicinity.

**Start of surface laid export cable;  
50°46.2077' N, 0°18.7643' W**

Please see chart below.

The vessel Ndeavour will arrive on site week commencing 19/02/18 to pull the export cable into the Offshore substation and then carry out the burial.

Mariners are advised to give the vessels a wide berth as they will be restricted in manoeuvrability whilst carrying out operations

Interaction between fishing gears (OR anchors) and the export cables could also cause damage to the export cables themselves.

All commercial/recreational fishing vessels deploying any form of demersal fishing gears (trawls/shellfish dredgers etc.) or fixed fishing gears (pots, traps, nets etc) and any vessel's anchors should ensure that:

**No such Gears, including anchors, come within the vicinity of the exposed/shallow buried cables.**

**Mobile or towed demersal fishing gears (trawls, shellfish dredgers etc) including anchors, DO NOT come within the vicinity of the cables**

Further information on the hazards of fishing adjacent to subsea cables can be found in:

- KIS-ORCA/Seafish document '*Kingfisher Awareness Chart, January 2016, English Channel*' and in the attached chart

Weblinks: [www.kis-orca.eu](http://www.kis-orca.eu) & [http://www.kis-orca.eu/media/9292/2016%20English%20Channel\\_LRes.pdf](http://www.kis-orca.eu/media/9292/2016%20English%20Channel_LRes.pdf)



# Notice to Mariners

## Rampion Offshore Wind Farm

Date of Issue: 10/02/2018

Notice Expires: Ongoing

### Wet stored anchor wire:

Due to technical problems with a winch there has been 1400 m of anchor wire laid on the sea bed. See chart below. Weather permitting there will be a guard vessel present until the wire is removed.

### Wet stored anchor cable;

50°45.3043 N, 0°18.8352 W - Not marked with surface buoy  
50°44.5661' N, 0°18.5585 W - Marked with a surface buoy

Below are way points where the cable changes direction

#### East Export Cable Route

#### West Export Cable Route

LATITUD	LONGITUD	KP		LATITUD	LONGITUD	KP
50° 49.0411453' N	0° 20.1491986' W	0		50° 49.0392569' N	0° 20.1559728' W	0
50° 49.0383954' N	0° 20.1471673' W	0.006		50° 49.0365229' N	0° 20.1541776' W	0.005
50° 48.8450241' N	0° 20.0043473' W	0.401		50° 48.8321138' N	0° 20.0213010' W	0.415
50° 48.5435783' N	0° 19.7817419' W	1.019		50° 48.5312412' N	0° 19.8257254' W	1.019
50° 47.5754360' N	0° 19.0671645' W	3		50° 47.5283632' N	0° 19.1741222' W	3.03
50° 47.0619271' N	0° 18.8052062' W	4.001		50° 46.9242174' N	0° 18.9365803' W	4.184
50° 46.7959655' N	0° 18.7318572' W	4.502		50° 46.8710244' N	0° 18.9223825' W	4.284
50° 46.6611182' N	0° 18.7172942' W	4.752		50° 46.5838764' N	0° 18.8887138' W	4.818
50° 46.1228324' N	0° 18.7778840' W	5.753		50° 46.0611405' N	0° 18.9565559' W	5.791
50° 45.4028104' N	0° 18.9771812' W	7.108		50° 45.4302627' N	0° 19.1313961' W	6.978
50° 45.3447367' N	0° 18.9859594' W	7.216		50° 45.3274051' N	0° 19.1548573' W	7.171
50° 45.2907955' N	0° 18.9871717' W	7.316		50° 45.1830551' N	0° 19.1582731' W	7.439
50° 45.2264755' N	0° 18.9803895' W	7.436		50° 45.0807508' N	0° 19.1340815' W	7.631
50° 43.8545862' N	0° 18.5755551' W	10.024		50° 44.4092272' N	0° 18.9209074' W	8.901
50° 43.5353821' N	0° 18.4567545' W	10.632		50° 44.2370203' N	0° 18.8760834' W	9.225
50° 43.4067649' N	0° 18.3879768' W	10.884		50° 43.7399867' N	0° 18.7176892' W	10.165
50° 43.3218335' N	0° 18.3272998' W	11.057		50° 43.4531794' N	0° 18.5891475' W	10.718
50° 43.2482600' N	0° 18.2567879' W	11.216		50° 43.3127411' N	0° 18.5123192' W	10.994
50° 43.2046700' N	0° 18.2066487' W	11.316		50° 43.2634912' N	0° 18.4778397' W	11.094
50° 43.0451085' N	0° 17.9882516' W	11.708		50° 43.2007868' N	0° 18.4231791' W	11.227
50° 42.8969501' N	0° 17.7661912' W	12.088		50° 43.1559313' N	0° 18.3757412' W	11.327
50° 42.4324193' N	0° 16.8658103' W	13.453		50° 42.8176502' N	0° 17.8872884' W	12.179
50° 41.9317806' N	0° 15.9784611' W	14.851		50° 42.4145324' N	0° 17.1150045' W	13.356
50° 41.7220852' N	0° 15.6528737' W	15.397		50° 41.9242877' N	0° 16.2156689' W	14.752
50° 41.7133732' N	0° 15.6394384' W	15.42		50° 41.6643728' N	0° 15.6559910' W	15.568
50° 41.7133732' N	0° 15.6394384' W	15.42		50° 41.6643728' N	0° 15.6559910' W	15.568
50° 41.6218602' N	0° 15.5819279' W	15.602		50° 41.6269395' N	0° 15.6136011' W	15.654
50° 41.6218602' N	0° 15.5819279' W	15.602		50° 41.6269395' N	0° 15.6136011' W	15.654
50° 41.5681136' N	0° 15.5889815' W	15.702		50° 41.5677536' N	0° 15.5919882' W	15.766

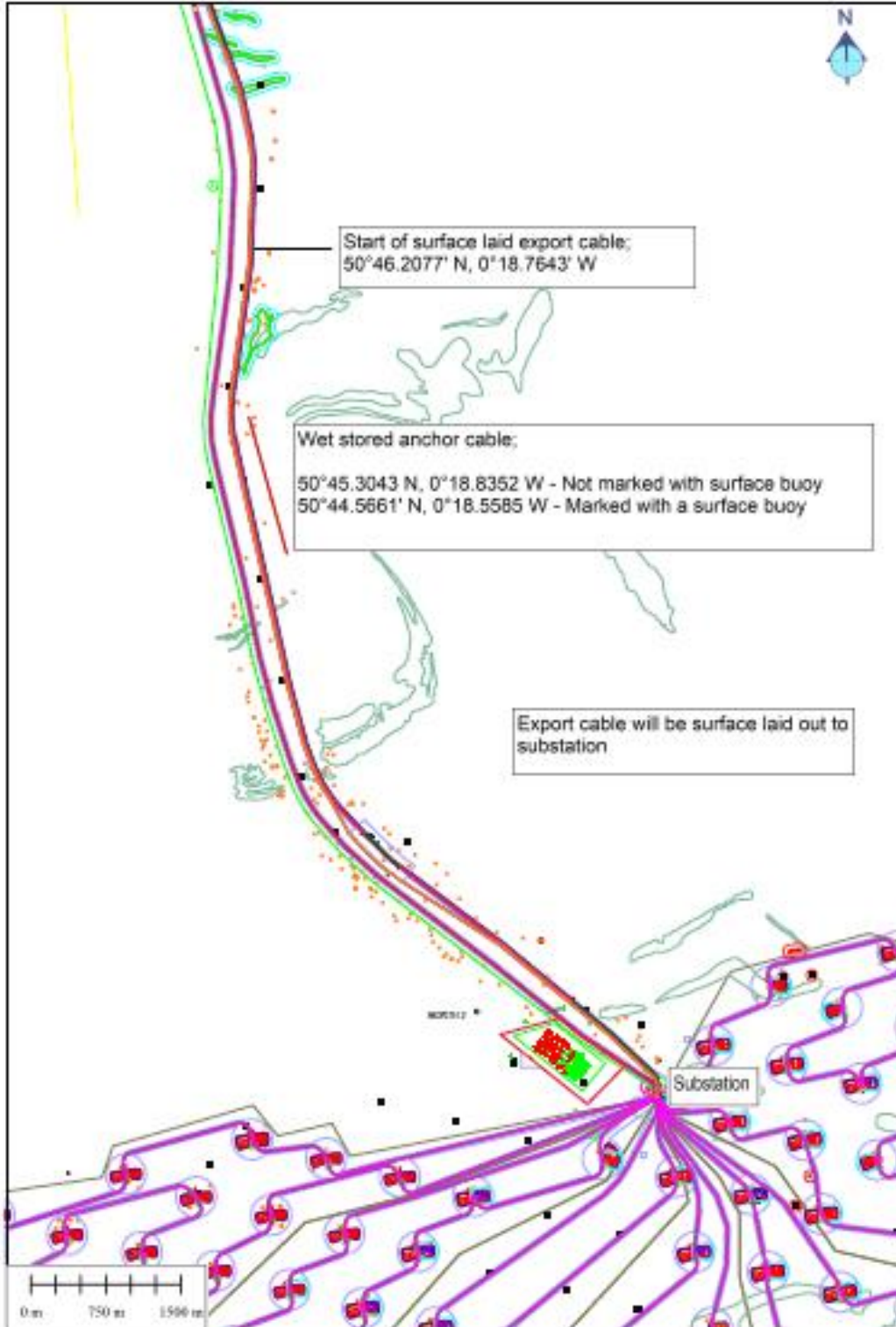


# Notice to Mariners

## Rampion Offshore Wind Farm

Date of Issue: 10/02/2018

Notice Expires: Ongoing





# Notice to Mariners

## Rampion Offshore Wind Farm

Date of Issue: 10/02/2018

Notice Expires: Ongoing

**Mark Brown**

Offshore Site Manager

Tel: +44 (0) 7491 057 121

Email: [mark.brown@eon.com](mailto:mark.brown@eon.com)

**Gordon Bain**

Lead Marine Coordinator

Tel: +44 (0) 7816 648 082

Email: [leadmc@rampionoffshore.com](mailto:leadmc@rampionoffshore.com).

**Duty Marine Coordinator**

Tel: +44 (0) 7557 942 945

Email: [traffic@rampionoffshore.com](mailto:traffic@rampionoffshore.com)

**Alex Winrow-Giffin**

Brown & May Fisheries Liaison

Tel: +44 (0) 7760 160 039

Email: [alex@brownmay.com](mailto:alex@brownmay.com)