



Weekly Notice of Operations (WNoO)

Rampion Offshore Wind Farm Limited Construction Operations

Issue Date: 26/03/2018 RAM-ERA-LOG-NOT-0001_110
- Weekly Notice of Operations

Contents

1)	Notice to Mariners (NtM) (Active)	2
2)	Hazards/Mitigation for Project Vessels and PAX	3
3)	Construction Vessels	4
4)	Guard Vessels	4
5)	Crew Transfer Vessels.....	5
6)	Upcoming Operations (following 7 days)	7
7)	Summary of Operations (previous 7 days)	8
8)	Looking further ahead (beyond 7 days) (new activities starting)	8
9)	Project Met mast details.....	8
10)	Project Wave Rider.....	8
11)	As Laid Cardinal Buoy Positions	9
12)	Contact details.....	9
13)	Export Cable Coordinates	10
14)	New Proposed CR4 Export Cable Coordinates	12
15)	Site Chart	13
16)	Surface laid export cable and wet stored anchor wire details see update NTM 0096	14



Weekly Notice of Operations (WNoO)

Rampion Offshore Wind Farm Limited Construction Operations

Issue Date: 26/03/2018 RAM-ERA-LOG-NOT-0001_110
- Weekly Notice of Operations

WNoO application:

- Issued weekly by the ROW Project Marine Co-ordination Team
- Notice to Mariners (NtM) will be issued for any unplanned/unmarked navigational hazards introduced by the project within our area of operation

1) Notice to Mariners (NtM) (Active)

Notice to Mariners Ref.	Date of Issue	Activity (Vessel in brackets)	Status of Works	Expected close out
ROWF NTM009	10/03/2016	Approval of Safety Zones	Ongoing	June 2018
ROWF NTM016	27/05/2016	Installation Rock Pads	Ongoing	June 2018
ROWF NTM017	24/06/2016	Installation Rock Pads Round 2	Ongoing	June 2018
ROWF NTM049	09/02/2017	Safe distances of all structures within Rampion Offshore Wind	Ongoing	Until further notice
ROWF NTM 071	23-08-2017	Updated Main Array Hazard Area	Ongoing	Until further notice
ROWF NTM 075	02-11-2017	Updated Export Cables Hazard areas	Ongoing	Until further notice
ROWF NTM 078	13-11-2017	Array Cable Rock bag placement/Export cable boulder removal	Ongoing	Until further notice
ROWF NTM 86	04-12-2017	Rampion Cardinal and Wave Rider buoy update	Ongoing	Until further notice
ROWF NTM 91	04-01-2018	Rampion Notices to Mariners Update 2018	Ongoing	Until further notice
ROWF NTM 94	01-02-2018	Rampion Aids to Navigation	Ongoing	May 2018
ROWF NTM 96	13-02-2018	Rampion surface laid export cable & wet stored anchor wire. Update	Ongoing	Until further notice
ROWF NTM 98	09-03-2018	CR4 Export Cable Geophysical Survey Operations	Ongoing	Until further notice

Secretary of State has approved our application for statutory Safety Zones (08/03/16) during the construction of the Rampion Wind Farm. These Safety Zones are defined as:

- 500m around all structures (where construction vessels are present)
- 50m around all structures (whilst personnel are working on them) including the offshore substation.

All project vessel masters and 3rd party sea users are requested to remain a minimum safe distance of 500m around each vessel. Project vessels are to keep a sharp lookout (Radar/AIS and visual) for non-project vessels entering these zones and report to Duty MC via VHF P1 ASAP.



Weekly Notice of Operations (WNoO)

Rampion Offshore Wind Farm Limited Construction Operations

Issue Date: 26/03/2018 RAM-ERA-LOG-NOT-0001_110
- Weekly Notice of Operations

2) Hazards/Mitigation for Project Vessels and PAX

- GSK pipeline
 - 30m Safety Zone either side of the GSK pipeline situated to the East of the export cable corridor. No project vessels will be permitted to enter this safety zone without prior permission by the Duty MC
- Redundant sewage outfall pipeline
 - 30m Safety Zone either side of the redundant sewage outfall pipeline to the west of the cable route
- Fishing gear
 - All Vessels to keep a sharp lookout and report any fishing gear to duty MC who will in turn distribute information to all other project vessels.
 - All vessels to operate appropriately where the hazard of fishing gear exists
- Fishing vessels
 - Standing order for all project vessels to pass at a safe distance.
- Dive Vessels/Divers
 - Standing order for all project vessels to pass at a safe distance
 - Specifically, if any vessel is present over a known dive site, project vessels are to pass a minimum of 1NM up tide.
- Scour protection and exposed cables on sea bed around foundations
 - Guard vessel in operation
 - Co-ordinates disseminated to FLOs
- Subsea cables (buried, shallow buried and surface laid).
 - All project vessels to keep a sharp lookout for third party sea users venturing near subsea cables laid on sea bed. Report any such instances to Traffic ASAP. Special consideration of the exposed cable at the jointing location (50 42.97'N, 000 17.88'W) and to the east of the Offshore Substation.

Refer to Documents RAM-ERA-SMG-SAF-0001_00 (Guidelines for CTV operators on specific hazards)


- Ensure all project vessels have latest Office Site Chart (Check with Duty MC for latest Rev)

Weekly Notice of Operations (WNoO)

Rampion Offshore Wind Farm Limited Construction Operations

Issue Date: 26/03/2018 RAM-ERA-LOG-NOT-0001_110

- Weekly Notice of Operations




Name	Flag	Call Sign/MMSI	Contact Info	L (m)	B (m)	D (m)	GT (t)	Contractor	Status (Start)	Picture
3) Construction Vessels										
Survey Vessel										
Rix Tiger	(UK)	2GGY4/235097309	VHF CH16/P1	19	9	1.8	42	Rix Sea Shuttle	Survey vessel 01/01/2018	
Deep Volans	(UK)	2BNH5/235067662	VHF CH16/P1	20	4	1.3	20.5	Deep BV	Geophysical surveys export CR4. Planned start 20/03/18	
4) Guard Vessels										
George Johannes	(UK)	MCPF5/232006450	VHF CH16/P1	26.27	6.48	3.2	122	Choice Marine	Guard Boat Duties 24/7 Start 30/07/2017	
Commodore P	(UK)	2GIR2/235097729	VHF CH16/P1	18	6	0.9	27	Offshore Turbine Services	Fast Response Guard Vessel Start 18/08/2017	

Weekly Notice of Operations (WNoO)

Rampion Offshore Wind Farm Limited Construction Operations

Issue Date: 26/03/2018 RAM-ERA-LOG-NOT-0001_110

- Weekly Notice of Operations






Name	Flag	Call Sign/MMSI	Contact Info	L (m)	B (m)	D (m)	GT (t)	Contractor	Status (Start)	Picture
5) Crew Transfer Vessels										
Windcat 6	(UK)	MXFD/235057789	VHF CH 16/P1	16	6	2	40	Windcat	Site CTV Working out of Newhaven	
Windcat 10	(UK)	2BAN2/235064453	VHF CH16/P1	22	6	2	36	Windcat	WTG M&E completion Working out of Newhaven	
Bravo	(DK)	OUYP2/219017205	VHF CH16/P1	21	7	2.3	118	Northern Offshore Services	WTG Commissioning Start 19/03/2018	

Weekly Notice of Operations (WNoO)

Rampion Offshore Wind Farm Limited Construction Operations

Issue Date: 26/03/2018 RAM-ERA-LOG-NOT-0001_110

- Weekly Notice of Operations

Name	Flag	Call Sign/MMSI	Contact Info	L (m)	B (m)	D (m)	GT (t)	Contractor	Status (Start)	Picture
Porth Nefyn	(UK)	2IRQ8/235112231	VHF CH 16/P1	19	8	1.6	48	Turbine Transfers	Crew change / Water taxi 11/03/2017	
Windcat 22	(UK)	2CUS9/235075935	VHF CH16/P1	22	6.5	2.1	40	Windcat	O&M Vessel Working out of Newhaven Start 29/01/201	
Sure Pride	(UK)	2FUM/235094357	VHF CH 16/P1	20	8	2	67	Surewind	WTG Commissioning Start 15/05/2017	
CWIND SWORD	(UK)	2IAE5/235108046	VHF CH 16/P1	22	6	1.8	35	C-Wind	O&M CTV Start 13/11/2017	
Windcat 14	UK	2BS19/235070403	VHF CH 16/P1	18	6	1.9	40	Windcat	SAP CTV Start 29/01/2018	



Weekly Notice of Operations (WNoO)

Rampion Offshore Wind Farm Limited Construction Operations

Issue Date: 26/03/2018 RAM-ERA-LOG-NOT-0001_110
- Weekly Notice of Operations

6) Upcoming Operations (following 7 days)

Operation	Location	Vessel	Operational Notes
Geophysical survey along CR4 Export cable route	250m either side of Export cable route CR4	Deep Volans	Vessel will be towing survey equipment to detect UXO anomalies. Operations are due to commence 12.03.18 and last approx. 30 days weather permitting.
WTG M&E completion/commissioning	All locations	Windcat 10, Sure Pride,	Ongoing
Inspection Bolting Snagging Painting cleaning	All locations	Windcat 6	Ongoing
Crew change Water Taxi	All Locations/Newhaven Port	Porth Nefyn	Ongoing
Project Guard vessels	Site 24hr Guard Vessels	George Johannes, Commodore P,	Ongoing Commodore will take over for Commander P in the next week.
Survey	Multibeam/side scan surveys/IOW	Rix Tiger	Ongoing
OSS works	Offshore sub station	Brava,	Ongoing
SAP CTV	All locations/energisation	WC 14	Ongoing
O&M Vessels	All locations	WC 22 C-Wind Sword	ongoing

All Mariners Operating in the Vicinity of Rampion Offshore Wind Farm are advised to familiarise themselves with MGN 372

https://www.gov.uk/government/uploads/system/uploads/attachment_data/file/440734/MGN_372.pdf



Weekly Notice of Operations (WNoO)

Rampion Offshore Wind Farm Limited Construction Operations

Issue Date: 26/03/2018 RAM-ERA-LOG-NOT-0001_110
- Weekly Notice of Operations

7) Summary of Operations (previous 7 days)

- Guard vessel offshore 24/7
- MVOW mechanical completions/commissioning.
- Ongoing surveys
- Complete CR3 installation (Burial still to be completed)
- Installation of Rock bags on inshore export cable CR3 completed

8) Looking further ahead (beyond 7 days) (new activities starting)

- Array cable protection
- Export cable protection and burial
- Complete commissioning of WTG's
- Installation of CR4 export cables
- Arrival of OSP Work platform
- Change over to operational Aids to Navigation
- Removal of 6 x Cardinals and repositioning remaining North and South to permanent positions
- Dive operations on the nearshore CR3

9) Project Met mast details

ID	Latitude	Longitude
Met mast	50°41.287'N	0°20.594'W

10) Project Wave Rider

Wave Riders 1 & 3 have been moved to the below as laid positions. All 3 x buoys have been serviced and the NAV aids are operational.

ID	Latitude	Longitude
Wave Rider 1 KP 5	50°46.546'N	0°18.862'W
Wave Rider 2 EOS	50°41.396'N	0°16.147'W
Wave Rider 3 Array	50°40.061'N	0°12.194'W



Weekly Notice of Operations (WNoO)

Rampion Offshore Wind Farm Limited Construction Operations

Issue Date: 26/03/2018 RAM-ERA-LOG-NOT-0001_110
- Weekly Notice of Operations

11) As Laid Cardinal Buoy Positions

Cardinal Name	Light Signature	Deployed Latitude	Deployed Longitude
North 1(AIS)	Q	50° 41.377'N	0° 21.898'W
North 2	V Q	50° 42.072'N	0° 17.098'W
North 3 (AIS)	Q	50° 42.771'N	0° 12.286'W
East 1	Q (3) 10s	50° 41.050'N	0° 11.311'W
South 1(AIS)	Q (6) + L Fl 15s	50° 39.172'N	0° 11.363'W
South 2	V Q (6)+L Fl 10s	50° 38.398'N	0° 16. 147'W
South 3 (AIS)	Q (6) + L Fl 15s	50° 37.631'N	0° 20.931'W
West 1	Q (9) + 15s	50° 39.439'N	0° 21.930'W

12) Contact details

Mark Brown

Offshore Site Manager

Tel: +44 (0) 7491 057 121

Email: mark.brown@eon.com

Gordon Bain

Lead Marine Coordinator

Tel: +44 (0) 7816 648082

Email: leadmc@rampionoffshore.com.

Duty Marine Coordinator

Tel: +44 (0) 7557 942945

Email: traffic@rampionoffshore.com



Weekly Notice of Operations (WNoO)

Rampion Offshore Wind Farm Limited Construction Operations

Issue Date: 26/03/2018 RAM-ERA-LOG-NOT-0001_110
- Weekly Notice of Operations

13) Export Cable Coordinates

This is **CR1 west** cable RPL

KP	WGS84 Latitude	WGS84 Longitude
0.000	50°49.0393'N	0°20.1560'W
0.006	50°49.0365'N	0°20.1542'W
0.415	50°48.8321'N	0°20.0213'W
1.019	50°48.5312'N	0°19.8257'W
3.030	50°47.5284'N	0°19.1741'W
4.184	50°46.9242'N	0°18.9366'W
4.284	50°46.8710'N	0°18.9224'W
4.718	50°46.6378'N	0°18.8890'W
4.818	50°46.5839'N	0°18.8887'W
5.791	50°46.0611'N	0°18.9566'W
6.978	50°45.4303'N	0°19.1314'W
7.171	50°45.3274'N	0°19.1549'W
7.272	50°45.2733'N	0°19.1603'W
7.439	50°45.1831'N	0°19.1583'W
7.631	50°45.0808'N	0°19.1341'W
8.901	50°44.4092'N	0°18.9209'W
9.225	50°44.2370'N	0°18.8761'W
9.635	50°44.0189'N	0°18.8193'W
10.165	50°43.7400'N	0°18.7177'W
10.718	50°43.4532'N	0°18.5891'W
10.994	50°43.3127'N	0°18.5123'W
11.094	50°43.2635'N	0°18.4778'W
11.227	50°43.2008'N	0°18.4232'W
11.327	50°43.1559'N	0°18.3757'W
11.733	50°42.9854'N	0°18.1587'W
12.179	50°42.8177'N	0°17.8873'W
13.356	50°42.4145'N	0°17.1150'W
13.629	50°42.3213'N	0°16.9363'W
14.751	50°41.9243'N	0°16.2157'W
15.573	50°41.6652'N	0°15.6499'W
15.641	50°41.6359'N	0°15.6168'W
15.751	50°41.5783'N	0°15.5962'W

This is **CR3 east** cable RPL (CR2 replacement)

KP	WGS84 Latitude	WGS84 Longitude
0.000	50°49.0411'N	0°20.1492'W
0.006	50°49.0384'N	0°20.1472'W
0.401	50°48.8450'N	0°20.0043'W
1.019	50°48.5436'N	0°19.7817'W
3.097	50°47.5283'N	0°19.0324'W
4.003	50°47.0635'N	0°18.7953'W
4.505	50°46.7967'N	0°18.7217'W
4.757	50°46.6611'N	0°18.7071'W
5.759	50°46.1220'N	0°18.7677'W
7.114	50°45.4019'N	0°18.9671'W
7.222	50°45.3444'N	0°18.9758'W
7.321	50°45.2910'N	0°18.9770'W
7.439	50°45.2273'N	0°18.9702'W
10.026	50°43.8559'N	0°18.5656'W
10.633	50°43.5372'N	0°18.4469'W
10.884	50°43.4091'N	0°18.3785'W
11.055	50°43.3249'N	0°18.3183'W
11.214	50°43.2519'N	0°18.2483'W
11.313	50°43.2087'N	0°18.1987'W
11.443	50°43.1551'N	0°18.1270'W
11.704	50°43.0495'N	0°17.9807'W
11.949	50°42.9493'N	0°17.8447'W
12.083	50°42.8969'N	0°17.7662'W
12.146	50°42.8475'N	0°17.6541'W
12.248	50°42.8757'N	0°17.7250'W
13.450	50°41.9365'N	0°15.9714'W
14.848	50°41.7608'N	0°15.6987'W
15.306	50°41.7048'N	0°15.6218'W
15.444	50°41.7048'N	0°15.6218'W
15.468	50°41.6938'N	0°15.6095'W
15.486	50°41.6857'N	0°15.6021'W
15.511	50°41.6733'N	0°15.5939'W
15.536	50°41.6603'N	0°15.5884'W
15.561	50°41.6469'N	0°15.5855'W
15.586	50°41.6334'N	0°15.5854'W
15.691	50°41.5770'N	0°15.5934'W



Weekly Notice of Operations (WNoO)

Rampion Offshore Wind Farm Limited Construction Operations

Issue Date: 26/03/2018 RAM-ERA-LOG-NOT-0001_110
 - Weekly Notice of Operations

FO RPL as follows:

KP	WGS84 Latitude	WGS84 Longitude
0.000	50°49.0288'N	0°20.1448'W
0.278	50°48.8916'N	0°20.0492'W
1.211	50°48.4311'N	0°19.7300'W
2.087	50°47.9985'N	0°19.4300'W
2.282	50°47.9126'N	0°19.3346'W
2.980	50°47.5715'N	0°19.0830'W
3.978	50°47.0594'N	0°18.8217'W
4.476	50°46.7947'N	0°18.7488'W
4.724	50°46.6612'N	0°18.7343'W
5.722	50°46.1242'N	0°18.7948'W
7.077	50°45.4043'N	0°18.9941'W
7.187	50°45.3453'N	0°19.0030'W
7.289	50°45.2905'N	0°19.0041'W
7.410	50°45.2251'N	0°18.9973'W
10.000	50°43.8523'N	0°18.5922'W
10.609	50°43.5324'N	0°18.4731'W
10.863	50°43.4028'N	0°18.4038'W
11.038	50°43.3168'N	0°18.3424'W
11.200	50°43.2422'N	0°18.2709'W
11.596	50°43.0527'N	0°18.1163'W
11.743	50°42.9910'N	0°18.0375'W
12.025	50°42.8797'N	0°17.8742'W
12.316	50°42.7828'N	0°17.6795'W
13.472	50°42.4242'N	0°16.8768'W
14.868	50°41.9239'N	0°15.9902'W
15.414	50°41.7145'N	0°15.6650'W
15.469	50°41.6927'N	0°15.6328'W
15.580	50°41.6382'N	0°15.5972'W
15.671	50°41.5891'N	0°15.5942'W
15.690	50°41.5771'N	0°15.5934'W



Weekly Notice of Operations (WNoO)

Rampion Offshore Wind Farm Limited Construction Operations

Issue Date: 26/03/2018 RAM-ERA-LOG-NOT-0001_110
- Weekly Notice of Operations

14) New Proposed CR4 Export Cable Coordinates

Latitude	Longitude	KP
50° 49.0347' N	0° 20.1759' W	0.000
50° 48.8174' N	0° 20.0679' W	0.422
50° 48.499' N	0° 19.9179' W	1.038
50° 47.5073' N	0° 19.2754' W	3.026
50° 46.9104' N	0° 19.0408' W	4.167
50° 46.8624' N	0° 19.028' W	4.257
50° 46.6346' N	0° 18.9954' W	4.681
50° 46.5865' N	0° 18.9951' W	4.770
50° 46.0698' N	0° 19.0621' W	5.732
50° 45.4367' N	0° 19.1944' W	6.916
50° 45.3316' N	0° 19.2183' W	7.113
50° 45.2744' N	0° 19.2241' W	7.219
50° 45.1798' N	0° 19.222' W	7.394
50° 45.0737' N	0° 19.1969' W	7.593
50° 44.4019' N	0° 18.9836' W	8.864
50° 44.2304' N	0° 18.939' W	9.186
50° 44.011' N	0° 18.8819' W	9.598
50° 43.7299' N	0° 18.7794' W	10.133
50° 43.441' N	0° 18.6499' W	10.690
50° 43.2979' N	0° 18.5716' W	10.971
50° 43.2454' N	0° 18.5349' W	11.078
50° 43.1797' N	0° 18.4776' W	11.217
50° 43.1319' N	0° 18.4271' W	11.324
50° 42.958' N	0° 18.2059' W	11.738
50° 42.7875' N	0° 17.9298' W	12.191
50° 42.3833' N	0° 17.1555' W	13.372
50° 42.2907' N	0° 16.9781' W	13.642
50° 41.9023' N	0° 16.2441' W	14.767
50° 41.796' N	0° 16.0069' W	15.109
50° 41.6474' N	0° 15.666' W	15.596
50° 41.6235' N	0° 15.6358' W	15.653
50° 41.5764' N	0° 15.5982' W	15.751

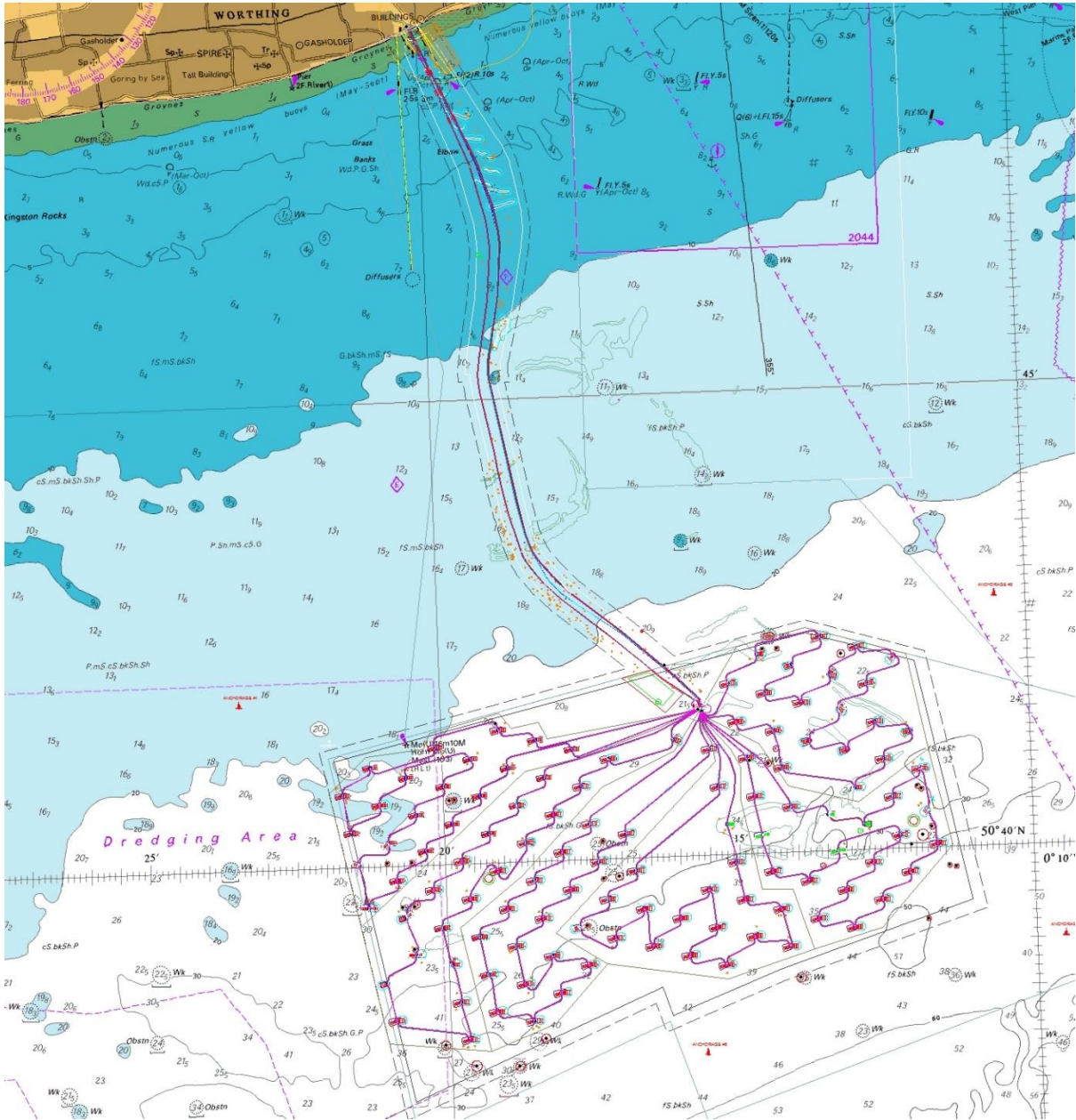


Weekly Notice of Operations (WNoO)

Rampion Offshore Wind Farm Limited Construction Operations

Issue Date: 26/03/2018 RAM-ERA-LOG-NOT-0001_110
- Weekly Notice of Operations

15) Site Chart



Weekly Notice of Operations (WNoO)

Rampion Offshore Wind Farm Limited Construction Operations

Issue Date: 26/03/2018 RAM-ERA-LOG-NOT-0001_110
- Weekly Notice of Operations

16) Surface laid export cable and wet stored anchor wire details see update NTM 0096

Anchor wire has been removed.

