

Notice to Mariners

Rampion Offshore Wind Farm

Date of Issue: 31/05/2018

Notice Expires: Ongoing

Dear Owners, Ships Agents, Masters, Pilots and Fishermen,

This NTM supersedes NTM110

Re: Rampion Offshore Wind Farm - EON-NTM-00110-Excavation of Float pit 7 for CR4 Export cable.

Operations to excavate a float pit on the CR4 inshore export cable route for cable installation vessel is planned to commence on the 07/06/2018. Operations are due to last a week weather permitting.

Vessels will be mobilising in the port of Shoreham from the 03/06/18

The spud leg vessel Razende Bol will carry out the excavating:



Razende Bol

Draught: 2.8 m

Length x Breadth: 49.35 m X 15 m

Gross Tonnage: 665

Speed recorded (Max / Average): 7.4/6.1 knots

Call Sign: PFSD

MMSI: 244963000

Flag: (NL)

The Multicat Coastal Chariot will assist the Razende Bol with operations:



The Coastal Chariot

Draught: 2.1 m

Length x Breadth: 36 m X 11 m

Gross Tonnage: 417

Speed recorded (Max / Average): 8.7/6.9 knots

Call Sign: PCWZ

MMSI: 244770069

Flag: (NL)

The Split Hopper Barge Johannes de Rijke will move the spoil from FP 7 and insert into FP 2 & 3



Johannes de Rijke

Draught: 2.1 m

Length x Breadth: 36 m X 11 m

Gross Tonnage: 417

Speed recorded (Max / Average): 6.2/5.9knots

Call Sign: PCWZ

MMSI: 244770069

Flag: (NL)

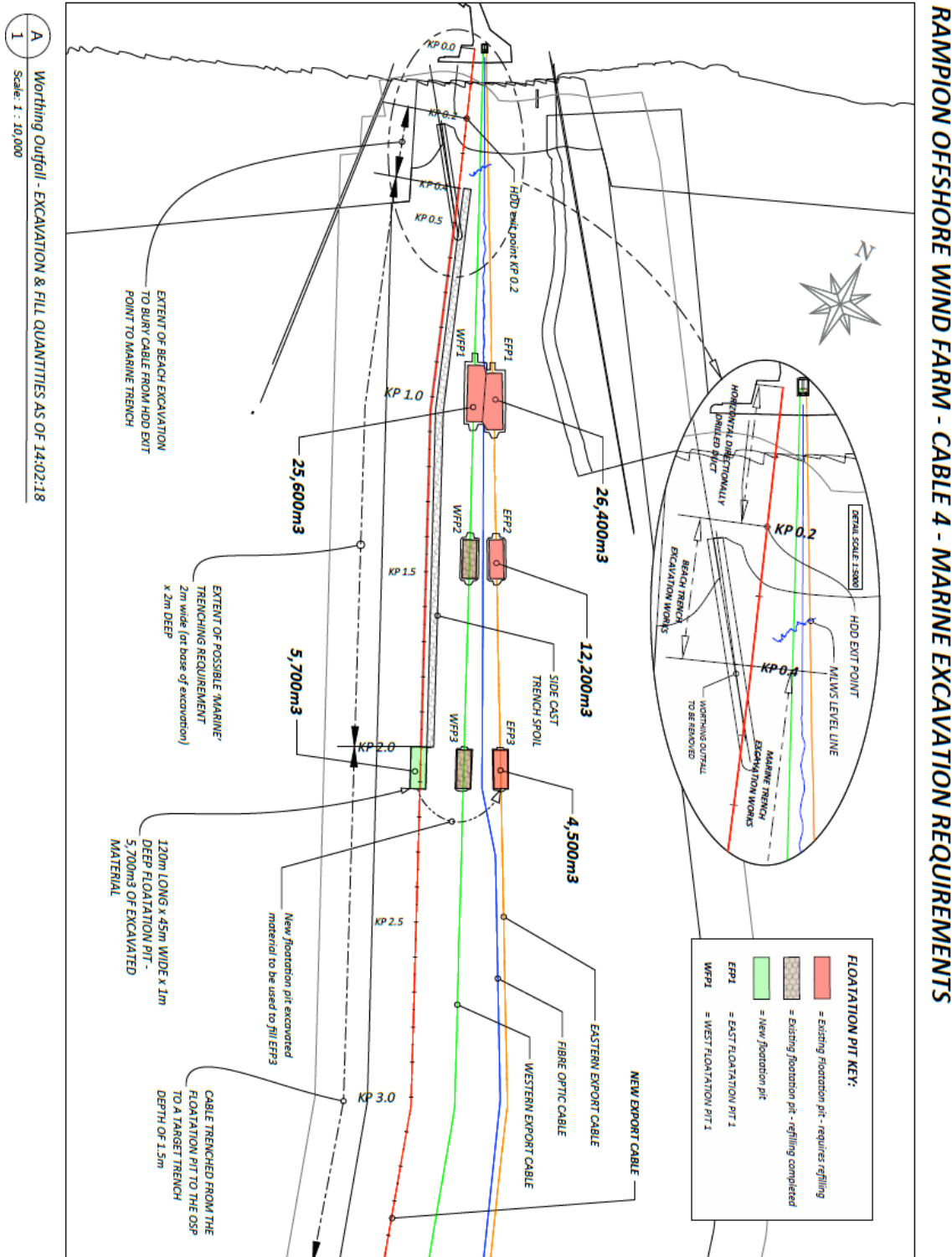
Notice to Mariners

Rampion Offshore Wind Farm

Date of Issue: 31/05/2018

Notice Expires: Ongoing

Diagram of locations.



Notice to Mariners

Rampion Offshore Wind Farm

Date of Issue: 31/05/2018

Notice Expires: Ongoing

Proposed Coordinates for CR4 Export cable.

Latitude	Longitude	KP
50° 49.0347' N	0° 20.1759' W	0.000
50° 48.8174' N	0° 20.0679' W	0.422
50° 48.499' N	0° 19.9179' W	1.038
50° 47.5073' N	0° 19.2754' W	3.026
50° 46.9104' N	0° 19.0408' W	4.167
50° 46.8624' N	0° 19.028' W	4.257
50° 46.6346' N	0° 18.9954' W	4.681
50° 46.5865' N	0° 18.9951' W	4.770
50° 46.0698' N	0° 19.0621' W	5.732
50° 45.4367' N	0° 19.1944' W	6.916
50° 45.3316' N	0° 19.2183' W	7.113
50° 45.2744' N	0° 19.2241' W	7.219
50° 45.1798' N	0° 19.222' W	7.394
50° 45.0737' N	0° 19.1969' W	7.593
50° 44.4019' N	0° 18.9836' W	8.864
50° 44.2304' N	0° 18.939' W	9.186
50° 44.011' N	0° 18.8819' W	9.598
50° 43.7299' N	0° 18.7794' W	10.133
50° 43.441' N	0° 18.6499' W	10.690
50° 43.2979' N	0° 18.5716' W	10.971
50° 43.2454' N	0° 18.5349' W	11.078
50° 43.1797' N	0° 18.4776' W	11.217
50° 43.1319' N	0° 18.4271' W	11.324
50° 42.958' N	0° 18.2059' W	11.738
50° 42.7875' N	0° 17.9298' W	12.191
50° 42.3833' N	0° 17.1555' W	13.372
50° 42.2907' N	0° 16.9781' W	13.642
50° 41.9023' N	0° 16.2441' W	14.767
50° 41.796' N	0° 16.0069' W	15.109
50° 41.6474' N	0° 15.666' W	15.596
50° 41.6235' N	0° 15.6358' W	15.653
50° 41.5764' N	0° 15.5982' W	15.751

Mariners are advised to give the vessel a wide berth as the vessel will be restricted in manoeuvrability whilst carrying out operations.

All vessels are requested to remain a minimum safe distance of 500m from the vessel during operations and whilst she is on location.

Vessel will be monitoring channel 16 VHF and the project P1 channel

Notice to Mariners

Rampion Offshore Wind Farm

Date of Issue: 31/05/2018

Notice Expires: Ongoing

Coordinates of Float Pit 7

50° 47.954' N	0° 19.591' W
50° 48.013' N	0° 19.630' W
50° 48.623' N	0° 19.594' W
50° 47.963' N	0° 19.555' W

Mark Brown

Offshore Site Manager

Tel: +44 (0) 7491 057 121

Email: mark.brown@eon.com

Gordon Bain

Lead Marine Coordinator

Tel: +44 (0) 7816 648 082

Email: leadmc@rampionoffshore.com

Duty Marine Coordinator

Tel: +44 (0) 7557 942 945

Email: traffic@rampionoffshore.com

Alex Winrow-Giffin

Brown & May Fisheries Liaison

Tel: +44 (0) 7760 160 039

Email: alex@brownmay.com