



# Weekly Notice of Operations (WNoO)

## Rampion Offshore Wind Farm Limited Construction Operations

Issue Date: 27/06/2018 RAM-ERA-LOG-NOT-0001\_120  
- Weekly Notice of Operations

### Contents

1)	Notice to Mariners (NtM) (Active) .....	2
2)	Hazards/Mitigation for Project Vessels and PAX .....	3
3)	Construction Vessels (All dates are weather dependant) .....	4
4)	Survey Vessel .....	5
5)	Guard Vessels .....	5
6)	Crew Transfer Vessels.....	6
7)	Upcoming Operations (following 7 days) .....	7
8)	Summary of Operations (previous 7 days) .....	7
9)	Looking further ahead (beyond 7 days) (new activities starting) .....	8
10)	Project Met mast details.....	8
11)	Project Wave Rider.....	8
12)	As Laid Operational Mark Positions .....	8
13)	Contact details.....	8
14)	Export Cable Coordinates .....	9
15)	New Proposed CR4 Export Cable Coordinates .....	11
16)	Site Chart .....	12
17)	Float Pit 7 Inshore export cable route CR4.....	13
18)	Excavation of nearshore CR4 export cable trench .....	14



# Weekly Notice of Operations (WNoO)

## Rampion Offshore Wind Farm Limited Construction Operations

Issue Date: 27/06/2018 RAM-ERA-LOG-NOT-0001\_120  
- Weekly Notice of Operations

WNoO application:

- Issued weekly by the ROW Project Marine Co-ordination Team
- Notice to Mariners (NtM) will be issued for any unplanned/unmarked navigational hazards introduced by the project within our area of operation

### 1) Notice to Mariners (NtM) (Active)

Notice to Mariners Ref.	Date of Issue	Activity (Vessel in brackets)	Status of Works	Expected close out
ROWF NTM009	10/03/2016	Approval of Safety Zones	Ongoing	June 2018
ROWF NTM 103	10-04-2018	Service and Relocation of Wave Rider Buoys	Ongoing	Until further notice
ROWF NTM 105	18-04-2018	Resolution arrival at Rampion Offshore Substation update	Ongoing	Until further notice
ROWF NTM 107	11-05-2018	Change to Rampion Site Markings	Ongoing	Until further notice
ROWF NTM 109	15-05-2018	Installation of Corrosion Coupons	Ongoing	Until further notice
ROWF NTM 111	29-05-2018	Excavation of Float Pit 7 inshore export cable route	Ongoing	Until further notice
ROWF NTM 112	07-06-2018	Excavation of Nearshore Export cable CR 4 Trench	Planned	Until further notice
ROWF NTM 114	17-06-2018	Exposed CR3 Export Cable update	Ongoing	Until further notice
ROWF NTM 115	17-06-2018	Non Historical Anchor returned to seabed	Ongoing	Until further notice
ROWF NTM 116	17-06-2018	NTM Update June 2018	Ongoing	Until further notice

**Secretary of State has approved our application for statutory Safety Zones (08/03/16) during the construction of the Rampion Wind Farm. These Safety Zones are defined as:**

- 500m around all structures (where construction vessels are present)
  - 50m around all structures (whilst personnel are working on them) including the offshore substation.
- All project vessel masters and 3<sup>rd</sup> party sea users are requested to remain a minimum safe distance of 500m around each vessel. Project vessels are to keep a sharp lookout (Radar/AIS and visual) for non-project vessels entering these zones and report to Duty MC via VHF P1 ASAP.



# Weekly Notice of Operations (WNoO)

## Rampion Offshore Wind Farm Limited Construction Operations

---

Issue Date: 27/06/2018 RAM-ERA-LOG-NOT-0001\_120  
- Weekly Notice of Operations

### 2) Hazards/Mitigation for Project Vessels and PAX

- GSK pipeline
  - 30m Safety Zone either side of the GSK pipeline situated to the East of the export cable corridor. No project vessels will be permitted to enter this safety zone without prior permission by the Duty MC
- Fishing gear
  - All Vessels to keep a sharp lookout and report any fishing gear to duty MC who will in turn distribute information to all other project vessels.
  - All vessels to operate appropriately where the hazard of fishing gear exists
  -
- Fishing vessels
  - Standing order for all project vessels to pass at a safe distance.
- Dive Vessels/Divers
  - Standing order for all project vessels to pass at a safe distance
  - Specifically, if any vessel is present over a known dive site, project vessels are to pass a minimum of 1NM up tide.
- Subsea cables (buried, shallow buried and surface laid).
  - All project vessels to keep a sharp lookout for third party sea users venturing near subsea cables laid on sea bed. Report any such instances to Traffic ASAP. Special consideration for the CR4 export cable from KP5 to the OSP






Refer to Documents RAM-ERA-SMG-SAF-0001\_00 (Guidelines for CTV operators on specific hazards)

- Ensure all project vessels have latest Office Site Chart (Check with Duty MC for latest Rev)

# Weekly Notice of Operations (WNoO)

## Rampion Offshore Wind Farm Limited Construction Operations



Issue Date: 27/06/2018 RAM-ERA-LOG-NOT-0001\_120  
- Weekly Notice of Operations

Name	Flag	Call Sign/MMSI	Contact Info	L (m)	B (m)	D (m)	GT (t)	Contractor	Status (Start)	Picture
<b>3) Construction Vessels (All dates are weather dependant)</b>										
Alanti	(CY)	5BYY2/212279000	VHF 16/P1	96.99	31.46	4.2	5974	ASSO	Installation of CR4 Export cable. Estimated start 25/07/2018	
Artemis	(CY)	5BVJ3/209618000	VHF 16/P1	67.83	15.6	5.6	1989	ASSO	Tow vessel for Atlanti Estimated start 25/07/2018	
Sgt Pepper	(GB)	2DMZ6/235084435	VHF 16/P1	15.5	6.06		50	ABCO	Installation of CR4 Export cable. Estimated start 25/07/2018	
Astrea	(GR)	SYBE/240691000	VHF 16/P1	71.3	17.5	4.9	3200	ASSO	Trenching of CR4 Export cable. Estimated start 01/08/2018	
C59 Emotion	(GB)		VHF 16/P1	18.3	18.3	1.24	100	ABCO	Excavation of inshore export cable CR4 trench. Estimated arrival 05/07/2018	
Capal Mara	(GB)	MBSP3/232010652	tbc	39.6	14	2.4	992	ASSO	Excavation of inshore export cable CR4 trench. Estimated arrival 05/07/2018	
MPI Resolution	(NL)	PCJM/246777000	VHF CH16/P1	130	38	4.1	14310	MPI	Arrival onsite 18/04/18. Planned demob Nov 18	

# Weekly Notice of Operations (WNoO)

## Rampion Offshore Wind Farm Limited Construction Operations








Issue Date: 27/06/2018 RAM-ERA-LOG-NOT-0001\_120  
- Weekly Notice of Operations

Name	Flag	Call Sign/MMSI	Contact Info	L (m)	B (m)	D (m)	GT (t)	Contractor	Status (Start)	Picture
<b>4) Survey Vessel</b>										
Rix Tiger	(UK)	2GGY4/235097309	VHF CH16/P1	19	9	1.8	42	Rix Sea Shuttle	Survey vessel 01/01/2018	
<b>5) Guard Vessels</b>										
George Johannes	(UK)	MCPF5/232006450	VHF CH16/P 1	26.27	6.48	3.2	122	Choice Marine	Guard Boat Duties 24/7 Start 30/07/2017	

# Weekly Notice of Operations (WNoO)

## Rampion Offshore Wind Farm Limited Construction Operations

Issue Date: 27/06/2018 RAM-ERA-LOG-NOT-0001\_120  
- Weekly Notice of Operations

Name	Flag	Call Sign/MMSI	Contact Info	L (m)	B (m)	D (m)	GT (t)	Contractor	Status (Start)	Picture
<b>6) Crew Transfer Vessels</b>										
CRC Lodestar	(UK)	MCQS8/232014126	VHF CH 16/P1	9.93	3.24	1.12	5.77	James Fisher	CTV/guard vessel for inshore operations	
Windcat 6	(UK)	MXFD/235057789	VHF CH 16/P1	16	6	2	40	Windcat	Site CTV Working out of Newhaven	
Brava	(DK)	OUYP2/219017205	VHF CH16/P1	21	7	2.3	118	Northern Offshore Services	OSP CTV Start 19/03/2018	
Porth Nefyn	(UK)	2IRQ8/235112231	VHF CH 16/P1	19	8	1.6	48	Turbine Transfers	Crew change / Water taxi 11/03/2017	
Windcat 22	(UK)	2CUS9/235075935	VHF CH16/P1	22	6.5	2.1	40	Windcat	O&M Vessel Working out of Newhaven Start 29/01/2017	
CWIND Sword	(UK)	2IAE5/235108046	VHF CH 16/P1	22	6	1.8	35	C-Wind	O&M CTV Start 13/11/2017	
Windcat 14	UK	2BS19/235070403	VHF CH 16/P1	18	6	1.9	40	Windcat	O&M Vessel Working out of Newhaven Start 01/04/2018	

# Weekly Notice of Operations (WNoO)

## Rampion Offshore Wind Farm Limited Construction Operations

Issue Date: 27/06/2018 RAM-ERA-LOG-NOT-0001\_120  
- Weekly Notice of Operations

### 7) Upcoming Operations (following 7 days)

Operation	Location	Vessel	Operational Notes
CR4 Nearshore export cable trenching	KP 0.32 to KP 2	Capal Mara	Operations are planned to commence on the 05/07/2018 weather permitting
Accommodation vessel OSP	Relocated to NWQ side of OSP/dive operations to install new J-Tube for CR4	MPI Resolution	As per NTM 00105
Over side cover OSP	All locations	Windcat 6	Ongoing
Crew change/remedials	All Locations/Newhaven Port	Porth Nefyn	Ongoing
Project Guard vessels	Site 24hr Guard Vessels	George Johannes,	Ongoing
Survey	Multibeam/side scan surveys/IOW	Rix Tiger	Ongoing
OSS works	Offshore sub station	Brava,	Ongoing
O&M Vessels	All locations	WC 22 C-Wind Sword WC 14	ongoing

**All Mariners Operating in the Vicinity of Rampion Offshore Wind Farm are advised to familiarise themselves with MGN 372**  
[https://www.gov.uk/government/uploads/system/uploads/attachment\\_data/file/440734/MGN\\_372.pdf](https://www.gov.uk/government/uploads/system/uploads/attachment_data/file/440734/MGN_372.pdf)

### 8) Summary of Operations (previous 7 days)

- Guard vessel offshore 24/7
- MVOW mechanical completions/commissioning.
- Ongoing surveys
- Remedial paint operations
- Dive operations OSP for new J-tube installation



# Weekly Notice of Operations (WNoO)

## Rampion Offshore Wind Farm Limited Construction Operations

Issue Date: 27/06/2018 RAM-ERA-LOG-NOT-0001\_120  
- Weekly Notice of Operations

### 9) Looking further ahead (beyond 7 days) (new activities starting)

- Installation of CR4 export cables
- Dive operations on the nearshore CR3
- Fibre optic burial

### 10) Project Met mast details

ID	Latitude	Longitude
Met mast	50°41.287'N	0°20.594'W

### 11) Project Wave Rider

ID	Latitude	Longitude
Wave Rider 1 KP 5	50°46.546'N	0°18.862'W
Wave Rider 2 EOS	50°41.396'N	0°16.147'W
Wave Rider 3 Array	50°40.061'N	0°12.194'W

### 12) As Laid Operational Mark Positions

Special Mark Name	Light Signature	Deployed Latitude	Deployed Longitude
North operation mark	FL Y 5S	50°41.790'N	0°16.815'W
South operational mark	FL Y 5S	50°38.552'N	0°16.947'W

### 13) Contact details

#### Mark Brown

Offshore Site Manager

Tel: +44 (0) 7491 057 121

Email: [mark.brown@eon.com](mailto:mark.brown@eon.com)

#### Gordon Bain

Lead Marine Coordinator

Tel: +44 (0) 7816 648082

Email: [leadmc@rampionoffshore.com](mailto:leadmc@rampionoffshore.com)

#### Duty Marine Coordinator

Tel: +44 (0) 7557 942945

Email: [traffic@rampionoffshore.com](mailto:traffic@rampionoffshore.com)





# Weekly Notice of Operations (WNoO)

## Rampion Offshore Wind Farm Limited Construction Operations

Issue Date: 27/06/2018 RAM-ERA-LOG-NOT-0001\_120  
- Weekly Notice of Operations

### 14) Export Cable Coordinates

This is **CR1 west** cable RPL

KP	WGS84 Latitude	WGS84 Longitude
0.000	50°49.0393'N	0°20.1560'W
0.006	50°49.0365'N	0°20.1542'W
0.415	50°48.8321'N	0°20.0213'W
1.019	50°48.5312'N	0°19.8257'W
3.030	50°47.5284'N	0°19.1741'W
4.184	50°46.9242'N	0°18.9366'W
4.284	50°46.8710'N	0°18.9224'W
4.718	50°46.6378'N	0°18.8890'W
4.818	50°46.5839'N	0°18.8887'W
5.791	50°46.0611'N	0°18.9566'W
6.978	50°45.4303'N	0°19.1314'W
7.171	50°45.3274'N	0°19.1549'W
7.272	50°45.2733'N	0°19.1603'W
7.439	50°45.1831'N	0°19.1583'W
7.631	50°45.0808'N	0°19.1341'W
8.901	50°44.4092'N	0°18.9209'W
9.225	50°44.2370'N	0°18.8761'W
9.635	50°44.0189'N	0°18.8193'W
10.165	50°43.7400'N	0°18.7177'W
10.718	50°43.4532'N	0°18.5891'W
10.994	50°43.3127'N	0°18.5123'W
11.094	50°43.2635'N	0°18.4778'W
11.227	50°43.2008'N	0°18.4232'W
11.327	50°43.1559'N	0°18.3757'W
11.733	50°42.9854'N	0°18.1587'W
12.179	50°42.8177'N	0°17.8873'W
13.356	50°42.4145'N	0°17.1150'W
13.629	50°42.3213'N	0°16.9363'W
14.751	50°41.9243'N	0°16.2157'W
15.573	50°41.6652'N	0°15.6499'W
15.641	50°41.6359'N	0°15.6168'W
15.751	50°41.5783'N	0°15.5962'W

This is **CR3 east** cable RPL (CR2 replacement)

KP	WGS84 Latitude	WGS84 Longitude
0.000	50°49.0411'N	0°20.1492'W
0.006	50°49.0384'N	0°20.1472'W
0.401	50°48.8450'N	0°20.0043'W
1.019	50°48.5436'N	0°19.7817'W
3.097	50°47.5283'N	0°19.0324'W
4.003	50°47.0635'N	0°18.7953'W
4.505	50°46.7967'N	0°18.7217'W
4.757	50°46.6611'N	0°18.7071'W
5.759	50°46.1220'N	0°18.7677'W
7.114	50°45.4019'N	0°18.9671'W
7.222	50°45.3444'N	0°18.9758'W
7.321	50°45.2910'N	0°18.9770'W
7.439	50°45.2273'N	0°18.9702'W
10.026	50°43.8559'N	0°18.5656'W
10.633	50°43.5372'N	0°18.4469'W
10.884	50°43.4091'N	0°18.3785'W
11.055	50°43.3249'N	0°18.3183'W
11.214	50°43.2519'N	0°18.2483'W
11.313	50°43.2087'N	0°18.1987'W
11.443	50°43.1551'N	0°18.1270'W
11.704	50°43.0495'N	0°17.9807'W
11.949	50°42.9493'N	0°17.8447'W
12.083	50°42.8969'N	0°17.7662'W
12.146	50°42.8475'N	0°17.6541'W
12.248	50°42.8757'N	0°17.7250'W
13.450	50°41.9365'N	0°15.9714'W
14.848	50°41.7608'N	0°15.6987'W
15.306	50°41.7048'N	0°15.6218'W
15.444	50°41.7048'N	0°15.6218'W
15.468	50°41.6938'N	0°15.6095'W
15.486	50°41.6857'N	0°15.6021'W
15.511	50°41.6733'N	0°15.5939'W
15.536	50°41.6603'N	0°15.5884'W
15.561	50°41.6469'N	0°15.5855'W
15.586	50°41.6334'N	0°15.5854'W
15.691	50°41.5770'N	0°15.5934'W



# Weekly Notice of Operations (WNoO)

## Rampion Offshore Wind Farm Limited Construction Operations

Issue Date: 27/06/2018 RAM-ERA-LOG-NOT-0001\_120  
- Weekly Notice of Operations

FO RPL as follows:

KP	WGS84 Latitude	WGS84 Longitude
0.000	50°49.0288'N	0°20.1448'W
0.278	50°48.8916'N	0°20.0492'W
1.211	50°48.4311'N	0°19.7300'W
2.087	50°47.9985'N	0°19.4300'W
2.282	50°47.9126'N	0°19.3346'W
2.980	50°47.5715'N	0°19.0830'W
3.978	50°47.0594'N	0°18.8217'W
4.476	50°46.7947'N	0°18.7488'W
4.724	50°46.6612'N	0°18.7343'W
5.722	50°46.1242'N	0°18.7948'W
7.077	50°45.4043'N	0°18.9941'W
7.187	50°45.3453'N	0°19.0030'W
7.289	50°45.2905'N	0°19.0041'W
7.410	50°45.2251'N	0°18.9973'W
10.000	50°43.8523'N	0°18.5922'W
10.609	50°43.5324'N	0°18.4731'W
10.863	50°43.4028'N	0°18.4038'W
11.038	50°43.3168'N	0°18.3424'W
11.200	50°43.2422'N	0°18.2709'W
11.596	50°43.0527'N	0°18.1163'W
11.743	50°42.9910'N	0°18.0375'W
12.025	50°42.8797'N	0°17.8742'W
12.316	50°42.7828'N	0°17.6795'W
13.472	50°42.4242'N	0°16.8768'W
14.868	50°41.9239'N	0°15.9902'W
15.414	50°41.7145'N	0°15.6650'W
15.469	50°41.6927'N	0°15.6328'W
15.580	50°41.6382'N	0°15.5972'W
15.671	50°41.5891'N	0°15.5942'W
15.690	50°41.5771'N	0°15.5934'W



# Weekly Notice of Operations (WNoO)

## Rampion Offshore Wind Farm Limited Construction Operations

Issue Date: 27/06/2018 RAM-ERA-LOG-NOT-0001\_120  
- Weekly Notice of Operations

15) New Proposed CR4 Export Cable Coordinates

Latitude	Longitude	KP
50° 49.0347' N	0° 20.1759' W	0.000
50° 48.8174' N	0° 20.0679' W	0.422
50° 48.499' N	0° 19.9179' W	1.038
50° 47.5073' N	0° 19.2754' W	3.026
50° 46.9104' N	0° 19.0408' W	4.167
50° 46.8624' N	0° 19.028' W	4.257
50° 46.6346' N	0° 18.9954' W	4.681
50° 46.5865' N	0° 18.9951' W	4.770
50° 46.0698' N	0° 19.0621' W	5.732
50° 45.4367' N	0° 19.1944' W	6.916
50° 45.3316' N	0° 19.2183' W	7.113
50° 45.2744' N	0° 19.2241' W	7.219
50° 45.1798' N	0° 19.222' W	7.394
50° 45.0737' N	0° 19.1969' W	7.593
50° 44.4019' N	0° 18.9836' W	8.864
50° 44.2304' N	0° 18.939' W	9.186
50° 44.011' N	0° 18.8819' W	9.598
50° 43.7299' N	0° 18.7794' W	10.133
50° 43.441' N	0° 18.6499' W	10.690
50° 43.2979' N	0° 18.5716' W	10.971
50° 43.2454' N	0° 18.5349' W	11.078
50° 43.1797' N	0° 18.4776' W	11.217
50° 43.1319' N	0° 18.4271' W	11.324
50° 42.958' N	0° 18.2059' W	11.738
50° 42.7875' N	0° 17.9298' W	12.191
50° 42.3833' N	0° 17.1555' W	13.372
50° 42.2907' N	0° 16.9781' W	13.642
50° 41.9023' N	0° 16.2441' W	14.767
50° 41.796' N	0° 16.0069' W	15.109
50° 41.6474' N	0° 15.666' W	15.596
50° 41.6235' N	0° 15.6358' W	15.653
50° 41.5764' N	0° 15.5982' W	15.751

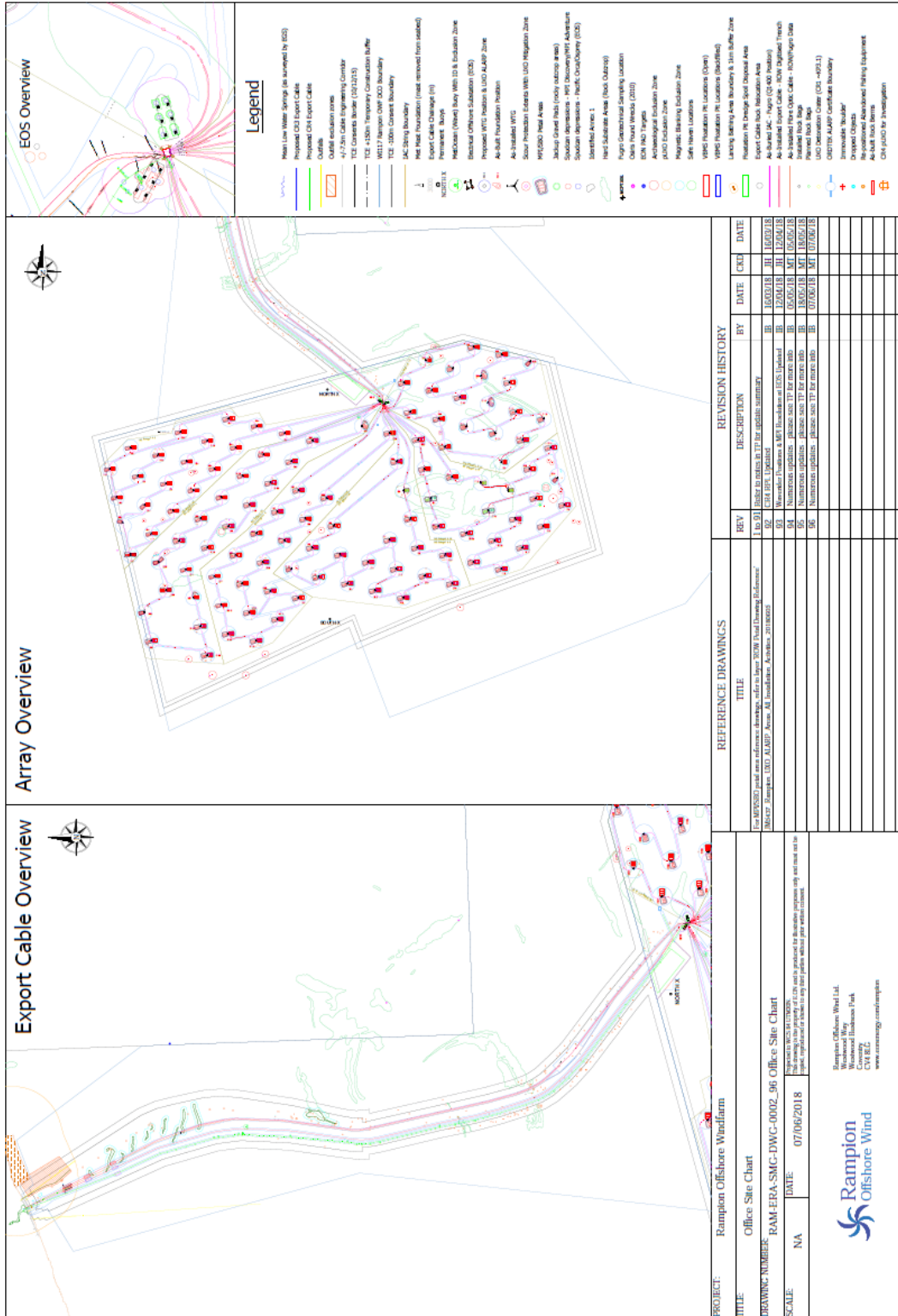


# Weekly Notice of Operations (WNoO)

## Rampion Offshore Wind Farm Limited Construction Operations

Issue Date: 27/06/2018 RAM-ERA-LOG-NOT-0001\_120  
- Weekly Notice of Operations

### 16) Site Chart



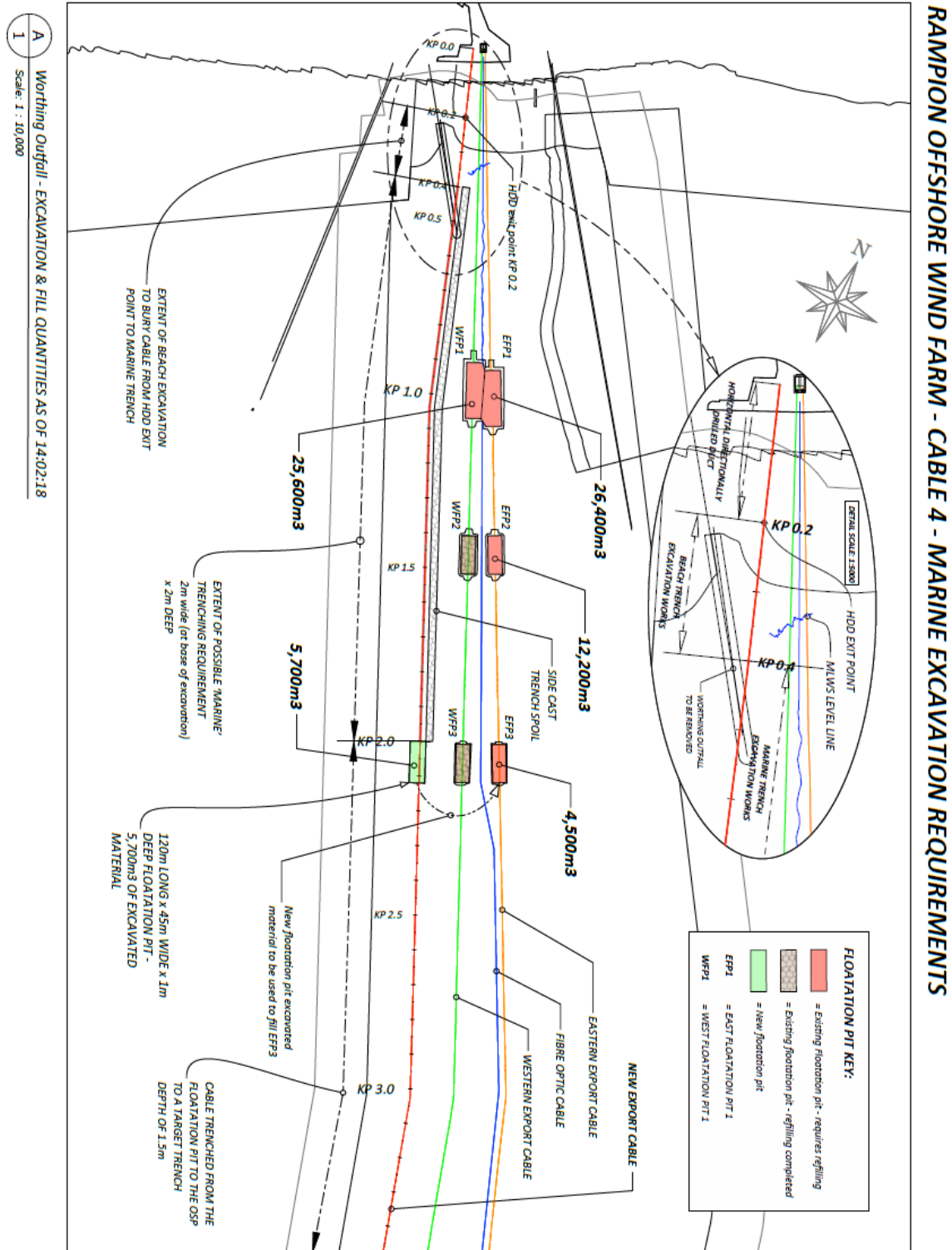
# Weekly Notice of Operations (WNoO)

## Rampion Offshore Wind Farm Limited Construction Operations

Issue Date: 27/06/2018 RAM-ERA-LOG-NOT-0001\_120  
- Weekly Notice of Operations

### 17) Float Pit 7 Inshore export cable route CR4

Operations for excavations are complete however FP 7 will be back filled after CR4 installation



# Weekly Notice of Operations (WNoO)

## Rampion Offshore Wind Farm Limited Construction Operations

Issue Date: 27/06/2018 RAM-ERA-LOG-NOT-0001\_120  
- Weekly Notice of Operations

### 18) Excavation of nearshore CR4 export cable trench

Operations have been delayed for approx. 2 weeks.

