

NOTICE TO MARINERS

Project: Area of Search for potential Rampion 2 OWF development

Client: RWE Renewables UK Ltd

Survey Period: July – August 2020

Scope of Work: Mariners are advised that the survey vessel, *MV Vigilant*, will be conducting early stage geophysical survey within an area of search identified for a potential Rampion 2 OWF development, off the coast of Sussex.

MV Vigilant is tasked with collecting data in the main site Area A and Area B adjacent to the existing Rampion Offshore Wind Farm and also in the Export Cable corridor of search (in water depths greater than 15m)

In addition to MV Vigilant, MV Titan Discovery will be working on the inshore area of the Export Cable corridor of search, and MV Ivero will be working in the main site in August.

Please see the survey area overview map in Figure 1 below.

MV Vigilant will be displaying the relevant IRPCS day shapes and night lights for vessels restricted in their ability to manoeuvre. *MV Vigilant* will be operating vessel mounted and towed survey gear (Up to 300m behind the vessel) and a safe operating distance is always requested around the vessel.

Vessel details:

MV Vigilant

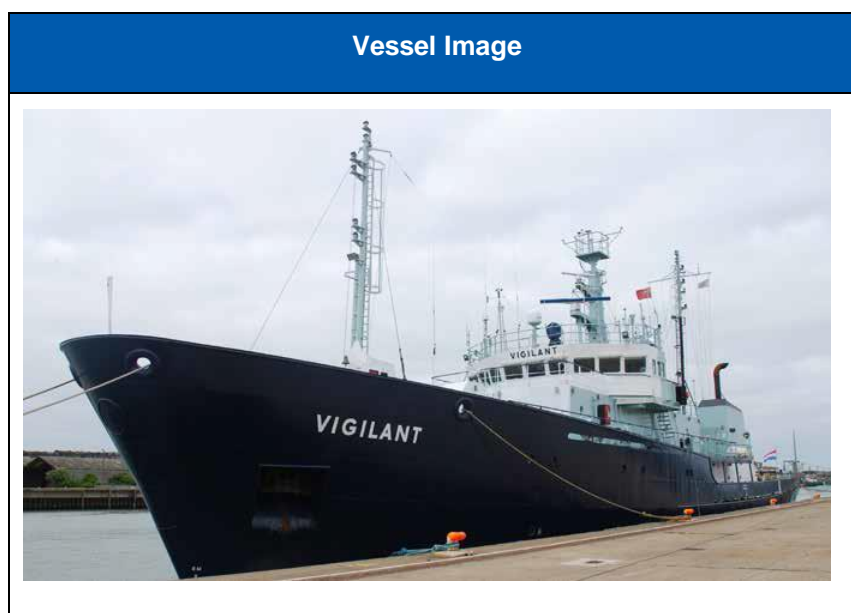


Table 1 - Vessel Contact details

MV Vigilant	
VSat	+1 904 271 3001
Email	master@vigilant.gardline.com partychief@vigilant.gardline.com
Call Sign	MCJN5
MMSI	232013162
VHF Channel	16

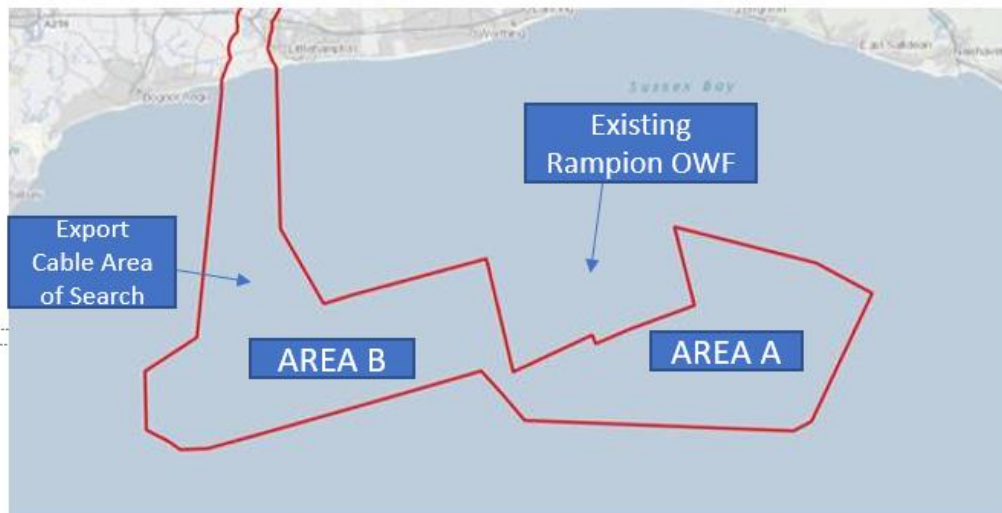


Figure 1 Overview of Survey Areas

Rampion 2 OWF Development is being explored within an area of search adjacent to the existing Rampion Offshore Wind Farm, divided for the operations into three areas.

MV Vigilant will conduct operations on the main site areas of search and the offshore part of the Export Cable area of search (in water depths greater than 15m)

Contact details

Gardline Limited: Mark Elvin (Project Manager)
+44 (0) 7876 656 620
mark.elvin@gardline.com