

NOTICE TO MARINERS No 10.2021

Component exchange Rampion wind farm October 2021

RWE Renewables UK Ltd at Rampion windfarm would like to inform mariners that we are carrying out essential maintenance on the wind turbines

This work is due commence on 20th October 2021 within the Rampion OWF Area, depending on weather.

The works involves; Using a jack up vessel to exchange large components in the nacelle of the turbine at I12,I13,J12 and H14 location using the vessel crane.

The current outline planning is as follows:

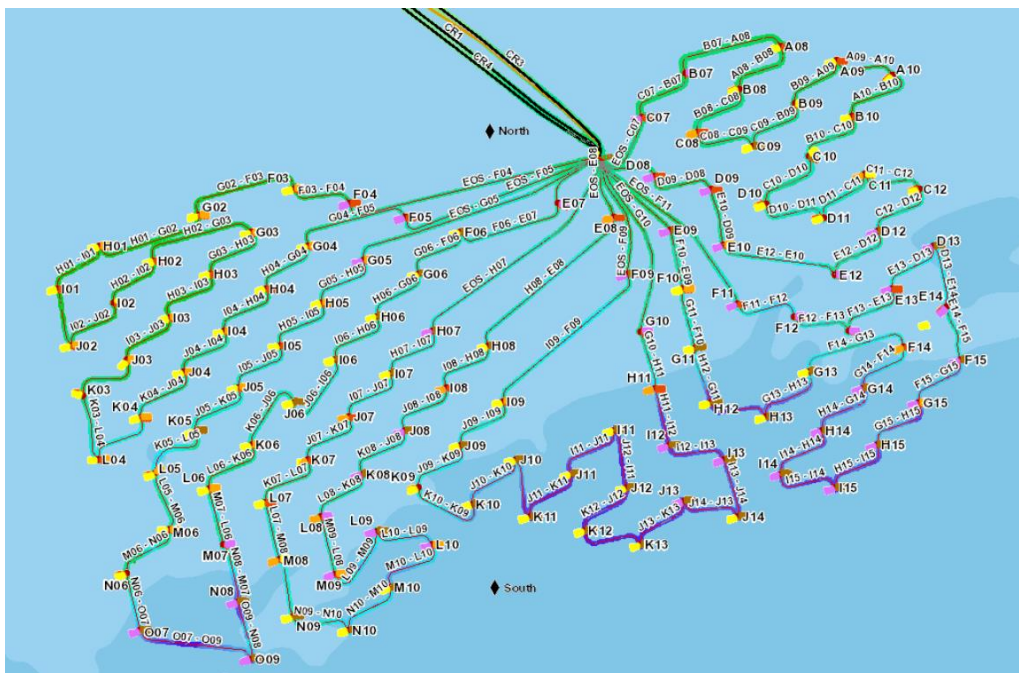
Start Date: 20th October 2021

Vessel Name : DEME Neptune

Which will require a 200m exclusion Zone from their location at I12,I13,J12 and H14

Location:

Identification	Lat. (WGS84)	Lon. (WGS84)
I12	50° 39.513°N	0° 14.945° W
I13	50° 39.398°N	0° 14.330° W
J12	50° 39.224°N	0° 15.433° W
H14	50° 39.576°N	0° 14.460° W



NOTICE TO MARINERS No 10.2021

Component exchange Rampion wind farm October 2021

Vessel to undertake major corrective works:

The DEME Neptune will be used.

Call Sign: LXNP

IMO / MMSI: 9616864 / 253532000

Contact details:

Email: Captain.Neptune@DEME-group.com



Durations: Approximately 26 Days which includes mobilisation and demobilisation of project equipment on to support vessels.

Projected Finish Dates Approximately 15th November 2021 depending on weather

For general enquires please contact via email;

✉: rampion.controlroom@RWE.com

TEL 07816061968